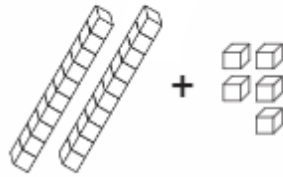


# 10 More...10 Less

1)

**25**

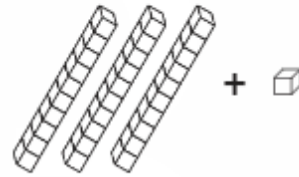


Add 10 by drawing another TEN in the picture.

10 more than 25 is \_\_\_\_\_

2)

**31**



Take away 10 by crossing out a TEN in the picture.

10 less than 31 is \_\_\_\_\_.

3) What number is 10 more than 76? \_\_\_\_\_

4) What number is 10 less than 19? \_\_\_\_\_

5) What number is 10 less than 93? \_\_\_\_\_

6) What number is 10 more than 88? \_\_\_\_\_

7) What number is 10 more than 50? \_\_\_\_\_

8) What number is 10 less than 47? \_\_\_\_\_

9)  $61 + 10 =$  \_\_\_\_\_

10)  $52 - 10 =$  \_\_\_\_\_

11)  $29 - 10 =$  \_\_\_\_\_

12)  $46 + 10 =$  \_\_\_\_\_

13)  $34 - 10 =$  \_\_\_\_\_

14)  $73 + 10 =$  \_\_\_\_\_

1) **16 = \_\_\_\_\_ + 6**

2) **13 = 10 + \_\_\_\_\_**

3) **19 = 10 + \_\_\_\_\_**

4) **14 = \_\_\_\_\_ + 4**

5) **12 = \_\_\_\_\_ + 2**

6) **17 = 10 + \_\_\_\_\_**

7) **18 = 10 + \_\_\_\_\_**

8) **11 = \_\_\_\_\_ + 1**

9) **15 = 10 + \_\_\_\_\_**

10) **10 = \_\_\_\_\_ + 0**

Complete the **10 PUZZLES**.



7)  $10 + \underline{\quad} = 10$

$9 + \underline{\quad} = 10$

$8 + \underline{\quad} = 10$

$7 + \underline{\quad} = 10$

$6 + \underline{\quad} = 10$

$5 + \underline{\quad} = 10$

8)  $0 + \underline{\quad} = 10$

$1 + \underline{\quad} = 10$

$2 + \underline{\quad} = 10$

$3 + \underline{\quad} = 10$

$4 + \underline{\quad} = 10$

$5 + \underline{\quad} = 10$





Name : \_\_\_\_\_

Score : \_\_\_\_\_

Teacher : \_\_\_\_\_

Date : \_\_\_\_\_

### Complete the Number Series

6 , \_\_\_\_\_ , \_\_\_\_\_ , \_\_\_\_\_ , 10 , 11 , \_\_\_\_\_ , \_\_\_\_\_

\_\_\_\_\_ , 1 , \_\_\_\_\_ , \_\_\_\_\_ , \_\_\_\_\_ , 5 , 6 , \_\_\_\_\_

\_\_\_\_\_ , \_\_\_\_\_ , 4 , \_\_\_\_\_ , 6 , \_\_\_\_\_ , \_\_\_\_\_ , 9

\_\_\_\_\_ , 9 , \_\_\_\_\_ , 11 , \_\_\_\_\_ , 13 , \_\_\_\_\_ , \_\_\_\_\_

13 , 14 , \_\_\_\_\_ , 16 , \_\_\_\_\_ , \_\_\_\_\_ , \_\_\_\_\_ , \_\_\_\_\_

1 , \_\_\_\_\_ , 3 , 4 , \_\_\_\_\_ , \_\_\_\_\_ , \_\_\_\_\_ , \_\_\_\_\_

\_\_\_\_\_ , \_\_\_\_\_ , \_\_\_\_\_ , 15 , 16 , 17 , \_\_\_\_\_ , \_\_\_\_\_

\_\_\_\_\_ , \_\_\_\_\_ , 11 , 12 , \_\_\_\_\_ , \_\_\_\_\_ , 15 , \_\_\_\_\_

\_\_\_\_\_ , 12 , 13 , \_\_\_\_\_ , \_\_\_\_\_ , 16 , \_\_\_\_\_ , \_\_\_\_\_

\_\_\_\_\_ , 8 , \_\_\_\_\_ , \_\_\_\_\_ , 11 , 12 , \_\_\_\_\_ , \_\_\_\_\_



# 100 More...100 Less

1)  $612 + 100 =$  \_\_\_\_\_

So, **100 more than 612** is \_\_\_\_\_.

2)  $384 + 100 =$  \_\_\_\_\_

So, **100 more than 384** is \_\_\_\_\_.

3)  $555 + 100 =$  \_\_\_\_\_

So, **100 more than 555** is \_\_\_\_\_.

4)  $27 + 100 =$  \_\_\_\_\_

So, **100 more than 27** is \_\_\_\_\_.

5)  $838 + 100 =$  \_\_\_\_\_

So, **100 more than 838** is \_\_\_\_\_.

1)  $310 - 100 =$  \_\_\_\_\_

So, **100 less than 310** is \_\_\_\_\_.

2)  $706 - 100 =$  \_\_\_\_\_

So, **100 less than 706** is \_\_\_\_\_.

3)  $444 - 100 =$  \_\_\_\_\_

So, **100 less than 444** is \_\_\_\_\_.

4)  $897 - 100 =$  \_\_\_\_\_

So, **100 less than 897** is \_\_\_\_\_.

5)  $579 - 100 =$  \_\_\_\_\_

So, **100 less than 579** is \_\_\_\_\_.

Name : \_\_\_\_\_

Score : \_\_\_\_\_

Teacher : \_\_\_\_\_

Date : \_\_\_\_\_

## Estimating Differences to the Nearest Tens

Estimate the difference by rounding each number to the nearest ten.

$$\begin{array}{r} 1) \quad 79 \longrightarrow 80 \\ - 63 \longrightarrow - 60 \\ \hline 20 \end{array}$$

$$\begin{array}{r} 8) \quad 49 \longrightarrow \\ - 25 \longrightarrow - \end{array}$$

$$\begin{array}{r} 2) \quad 26 \longrightarrow \\ - 12 \longrightarrow - \end{array}$$

$$\begin{array}{r} 9) \quad 65 \longrightarrow \\ - 55 \longrightarrow - \end{array}$$

$$\begin{array}{r} 3) \quad 94 \longrightarrow \\ - 46 \longrightarrow - \end{array}$$

$$\begin{array}{r} 10) \quad 48 \longrightarrow \\ - 38 \longrightarrow - \end{array}$$

$$\begin{array}{r} 4) \quad 77 \longrightarrow \\ - 17 \longrightarrow - \end{array}$$

$$\begin{array}{r} 11) \quad 56 \longrightarrow \\ - 16 \longrightarrow - \end{array}$$

$$\begin{array}{r} 5) \quad 84 \longrightarrow \\ - 39 \longrightarrow - \end{array}$$

$$\begin{array}{r} 12) \quad 86 \longrightarrow \\ - 64 \longrightarrow - \end{array}$$

$$\begin{array}{r} 6) \quad 59 \longrightarrow \\ - 21 \longrightarrow - \end{array}$$

$$\begin{array}{r} 13) \quad 58 \longrightarrow \\ - 15 \longrightarrow - \end{array}$$

$$\begin{array}{r} 7) \quad 73 \longrightarrow \\ - 19 \longrightarrow - \end{array}$$

$$\begin{array}{r} 14) \quad 71 \longrightarrow \\ - 36 \longrightarrow - \end{array}$$



Name : \_\_\_\_\_

Score : \_\_\_\_\_

Teacher : \_\_\_\_\_

Date : \_\_\_\_\_

## Estimating Sums to the Nearest Tens

Estimate the sum by rounding each addend to the nearest ten.

$$\begin{array}{r} 1) \quad 68 \quad \longrightarrow \quad 70 \\ + 41 \quad \longrightarrow \quad + 40 \\ \hline \quad \quad \quad \quad \quad \quad 110 \end{array}$$

$$\begin{array}{r} 8) \quad 49 \quad \longrightarrow \\ + 52 \quad \longrightarrow \quad + \end{array}$$

$$\begin{array}{r} 2) \quad 12 \quad \longrightarrow \\ + 57 \quad \longrightarrow \quad + \end{array}$$

$$\begin{array}{r} 9) \quad 74 \quad \longrightarrow \\ + 31 \quad \longrightarrow \quad + \end{array}$$

$$\begin{array}{r} 3) \quad 85 \quad \longrightarrow \\ + 94 \quad \longrightarrow \quad + \end{array}$$

$$\begin{array}{r} 10) \quad 66 \quad \longrightarrow \\ + 87 \quad \longrightarrow \quad + \end{array}$$

$$\begin{array}{r} 4) \quad 76 \quad \longrightarrow \\ + 91 \quad \longrightarrow \quad + \end{array}$$

$$\begin{array}{r} 11) \quad 59 \quad \longrightarrow \\ + 17 \quad \longrightarrow \quad + \end{array}$$

$$\begin{array}{r} 5) \quad 56 \quad \longrightarrow \\ + 83 \quad \longrightarrow \quad + \end{array}$$

$$\begin{array}{r} 12) \quad 88 \quad \longrightarrow \\ + 47 \quad \longrightarrow \quad + \end{array}$$

$$\begin{array}{r} 6) \quad 24 \quad \longrightarrow \\ + 48 \quad \longrightarrow \quad + \end{array}$$

$$\begin{array}{r} 13) \quad 32 \quad \longrightarrow \\ + 29 \quad \longrightarrow \quad + \end{array}$$

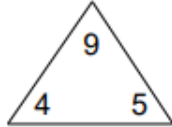
$$\begin{array}{r} 7) \quad 64 \quad \longrightarrow \\ + 79 \quad \longrightarrow \quad + \end{array}$$

$$\begin{array}{r} 14) \quad 86 \quad \longrightarrow \\ + 54 \quad \longrightarrow \quad + \end{array}$$

# Fact families

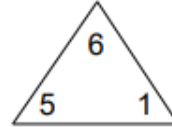
Complete each family of facts.

1.



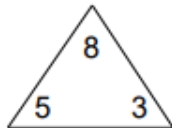
$$\begin{array}{r} \square + \square = \square \\ \square + \square = \square \\ \square - \square = \square \\ \square - \square = \square \end{array}$$

2.



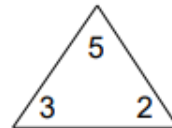
$$\begin{array}{r} \square + \square = \square \\ \square + \square = \square \\ \square - \square = \square \\ \square - \square = \square \end{array}$$

3.



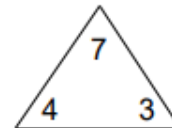
$$\begin{array}{r} \square + \square = \square \\ \square + \square = \square \\ \square - \square = \square \\ \square - \square = \square \end{array}$$

4.



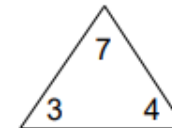
$$\begin{array}{r} \square + \square = \square \\ \square + \square = \square \\ \square - \square = \square \\ \square - \square = \square \end{array}$$

5.



$$\begin{array}{r} \square + \square = \square \\ \square + \square = \square \\ \square - \square = \square \\ \square - \square = \square \end{array}$$

6.



$$\begin{array}{r} \square + \square = \square \\ \square + \square = \square \\ \square - \square = \square \\ \square - \square = \square \end{array}$$

Name : \_\_\_\_\_

Score : \_\_\_\_\_

Teacher : \_\_\_\_\_

Date : \_\_\_\_\_

### Count the Money

1)



\$ \_\_\_\_\_



2)



\$ \_\_\_\_\_



3)



\$ \_\_\_\_\_



4)



\$ \_\_\_\_\_



5)



\$ \_\_\_\_\_





Name : \_\_\_\_\_

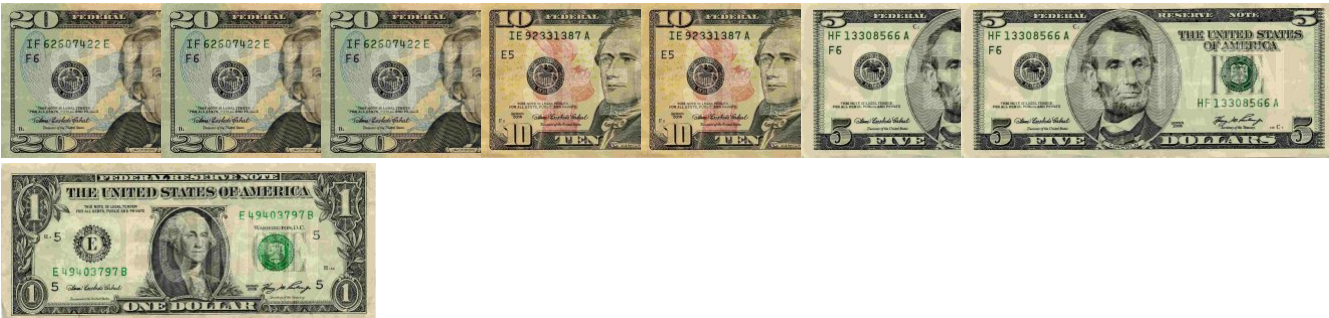
Score : \_\_\_\_\_

Teacher : \_\_\_\_\_

Date : \_\_\_\_\_

## Count the Money

1)



\$ \_\_\_\_\_

2)



\$ \_\_\_\_\_

3)



\$ \_\_\_\_\_

4)



\$ \_\_\_\_\_

5)



\$ \_\_\_\_\_

6)



\$ \_\_\_\_\_

7)



\$ \_\_\_\_\_



Name : \_\_\_\_\_

Score : \_\_\_\_\_

Teacher : \_\_\_\_\_

Date : \_\_\_\_\_

## Hundreds Table (201 - 300)

201		203	204		206			209	
211	212		214	215	216	217	218	219	
221	222	223		225	226	227	228	229	
231	232	233	234		236			239	240
		243	244	245		247	248	249	250
	252	253	254	255	256		258	259	
	262		264	265	266	267		269	
271	272	273	274	275	276	277		279	
281		283		285		287	288	289	
291	292	293	294	295	296	297			300



Name : \_\_\_\_\_

Score : \_\_\_\_\_

Teacher : \_\_\_\_\_

Date : \_\_\_\_\_

## Hundreds Table (101 - 200)

101	102			105		107			
	112		114	115	116	117	118	119	120
121	122	123	124						130
	132		134	135	136	137		139	
					146			149	
				155	156				160
		163			166	167		169	170
	172		174	175	176				180
181	182	183		185		187	188	189	
191	192				196	197		199	



Name : \_\_\_\_\_

Score : \_\_\_\_\_

Teacher : \_\_\_\_\_

Date : \_\_\_\_\_

---

$$\begin{array}{r} 6 \\ + 5 \\ \hline \end{array}$$

$$\begin{array}{r} 6 \\ + 0 \\ \hline \end{array}$$

$$\begin{array}{r} 9 \\ + 0 \\ \hline \end{array}$$

$$\begin{array}{r} 9 \\ + 3 \\ \hline \end{array}$$

$$\begin{array}{r} 9 \\ + 5 \\ \hline \end{array}$$

$$\begin{array}{r} 7 \\ + 4 \\ \hline \end{array}$$

$$\begin{array}{r} 3 \\ + 3 \\ \hline \end{array}$$

$$\begin{array}{r} 1 \\ + 0 \\ \hline \end{array}$$

$$\begin{array}{r} 8 \\ + 0 \\ \hline \end{array}$$

$$\begin{array}{r} 7 \\ + 0 \\ \hline \end{array}$$

$$\begin{array}{r} 2 \\ + 3 \\ \hline \end{array}$$

$$\begin{array}{r} 2 \\ + 2 \\ \hline \end{array}$$

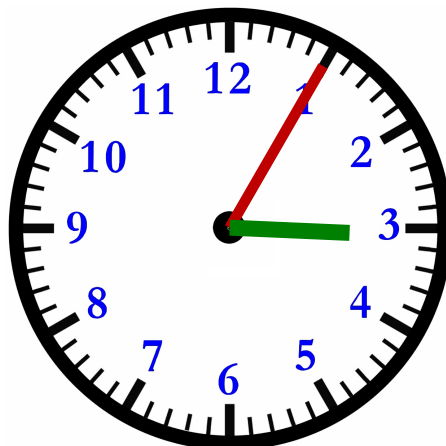
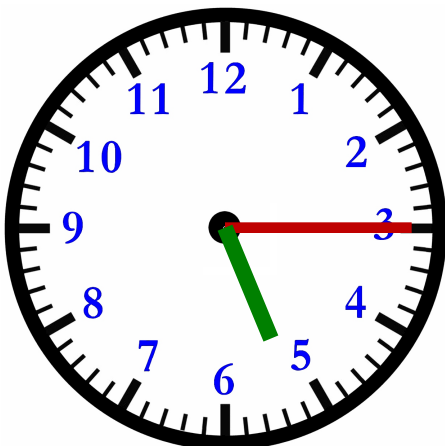
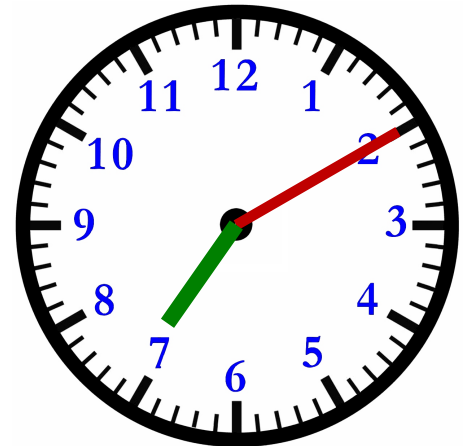
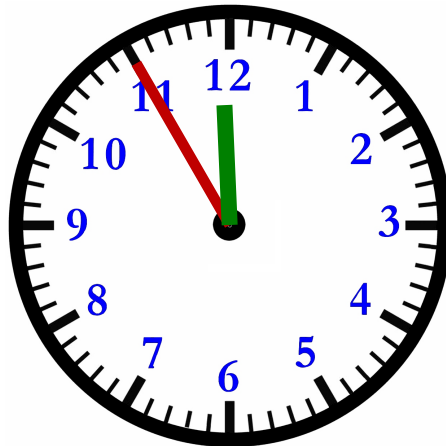
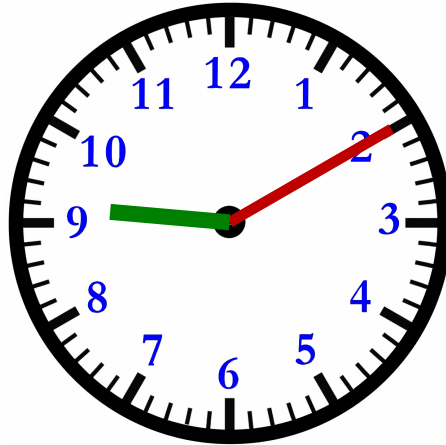
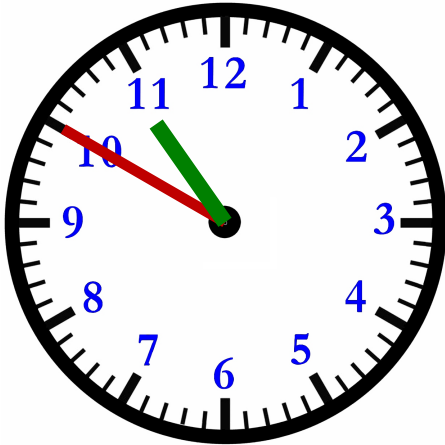
Name : \_\_\_\_\_

Score : \_\_\_\_\_

Teacher : \_\_\_\_\_

Date : \_\_\_\_\_

What Time Is It ?





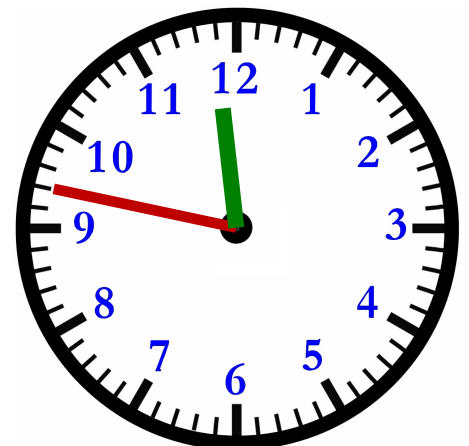
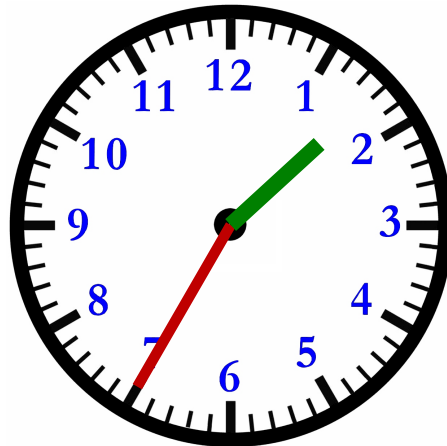
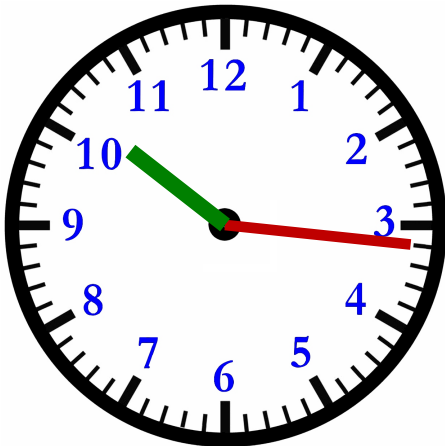
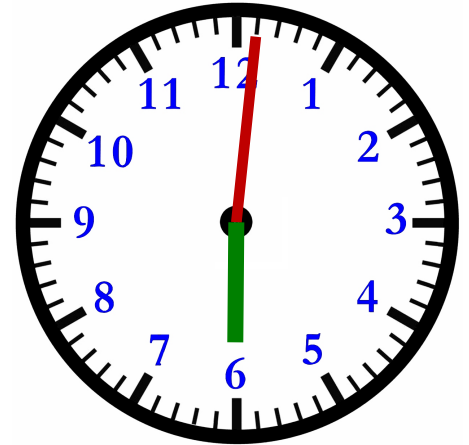
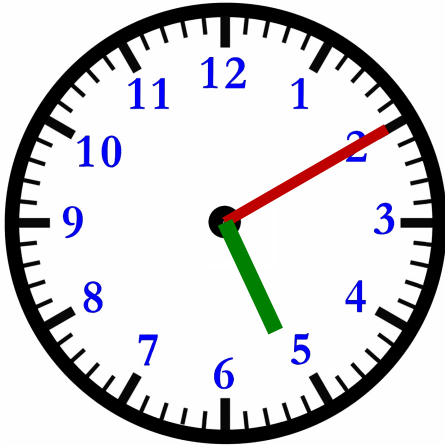
Name : \_\_\_\_\_

Score : \_\_\_\_\_

Teacher : \_\_\_\_\_

Date : \_\_\_\_\_

What Time Is It ?



Name : \_\_\_\_\_

Score : \_\_\_\_\_

Teacher : \_\_\_\_\_

Date : \_\_\_\_\_

## Filling In Time On Clocks

Fill out each missing clock based off the time of its pair.

